



***OPERATIONS AND MAINTENANCE***

**NOVASTRIP 1026**

**(50AMP Four Wire Plug)**

© Copyright 1997 by NOVATEK Corporation  
Revision 2006

All rights reserved printed in the United States of America. No part of this manual may be used or reproduced in any form or by any means, stored in data base or retrieval system, without prior written permission from NOVATEK Corporation.

Making copies of this manual for any purpose other than your own personal use is a violation of the United States copyright laws.

June 1,2010 issue 1.0

**Specifications subject to changes without notice!**

If you have any questions, please contact us:

NOVATEK CORORATION

155 Philips Road

Exton, PA 19341

USA

[www.novatekco.com](http://www.novatekco.com)

Toll Free 866 563-7800

Telephone: +1 610 363-7800

Fax +1 610 363-9620

Email: [Sales@Novatekco.com](mailto:Sales@Novatekco.com)

# TABLE OF CONTENTS

<b>SECTION I</b>	
Introduction.....	4
<b>SECTION II</b>	
General Description.....	5
<b>SECTION III</b>	
Routine Maintenance.....	6
Control Description.....	6-7
<b>SECTION IV</b>	
Prior to Start-Up.....	8
Start-Up.....	8
<b>SECTION V</b>	
Setting Controller Functions.....	9
<b>SECTION VI</b>	
Removal Procedure.....	10
Parts Breakdown.....	11
Diagram of Unit and Control Panel.....	12
<b>SECTION VII</b>	
Safety Rules.....	13
Trouble Shouting.....	14
<b>SECTION VIII</b>	
Wiring Diagram.....	15

## SECTION I

### INTRODUCTION

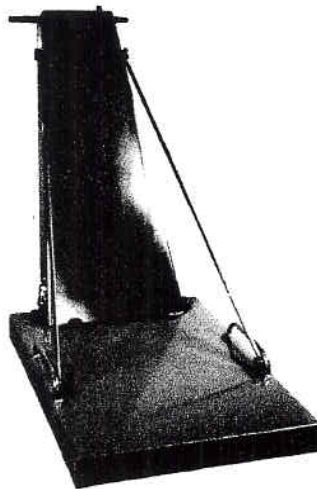
This operation and maintenance manual is furnished with each **NOVASTRIP 1026** unit. It outlines general equipment use and the operation and maintenance requirements for efficient and safe operation.

It is very important for the operator to become familiar with the OSHA requirements for Asbestos tile removal.

### **READ ALL INSTRUCTIONS AND DATA IN THIS OPERATION AND MAINTENANCE MANUAL PRIOR TO OPERATION OF THIS EQUIPMENT.**

These instructions are for your protection and convenience. Please read them carefully since failure to follow the precautions could result in injury. Whenever using electric powered equipment, basic safety precautions should be followed.

If after reading this manual anything seems unclear, contact a NOVATEK authorized distributor or NOVATEK directly by dialing 1-866-563-7800.



## SECTION II

### GENERAL DESCRIPTION

The NOVASTRIP 1026, a portable infrared heating unit designed and manufactured for NOVATEK CORP., softens tile adhesive for complete intact tile removal. This unit is capable of heating up to eight (8) 9" x 9" tiles or six (6) 12" x 12" tiles within a single pass.

This unit consists of a heat panel with individually wrapped heating elements, which are removable if damaged. This unit also includes a built in thermo-well for accurate temperature reading and control. It also features a dual display temperature control processor linked to a dual display timer allowing for optimum heat and timing control. The unit also utilizes a removable handle for ease of transportation and/or shipping.

**The NOVASTRIP 1026 requires a 220/240v, single phase power source which can be plugged into a standard Four Pole 50 amp capacity outlet.**

### WARNING

**Do not use circuits exceeding specified voltage. Higher voltage will damage controls and could cause shock or fire hazards.**

## SECTION III

### ROUTINE MAINTENANCE

Inspect the unit for any loose or damaged parts every time prior to use.

**CAUTION:** Make sure power supply is off prior to inspection!

1. Wipe outside surfaces of unit to remove accumulated dust or dirt. Clean out dust and dirt from control panel. NEVER USE SOLVENTS.
2. Periodic checks should be made to ensure timer and temperature controller are working properly.
3. Clean face of heat panel daily by wiping surface with a damp towel. This will help remove accumulated wax, dust or dirt built up on the face of panel. **CAUTION:** Make sure power supply is off prior to cleaning.
4. Inspect power connection to heat panel and connection the thermocouple. Make sure connectors are secure to the power lines and that there are no bare wires showing. If connectors are loose or bare wires are showing electrical shock may occur.

### CONTROL DESCRIPTIONS

#### **1. Key Switch**

This on/off switch has been included into this system to provide power to the controls and heater panel when set in the "ON" position. When the switch is in the "OFF" position, the key may be removed for safety against any unauthorized use.

#### **2. Emergency Stop Button**

This has been included to cut power to the controls and heater panel immediately in case of emergency. To re-activate the unit, the button needs to be restored to the "ON", pulled out position.

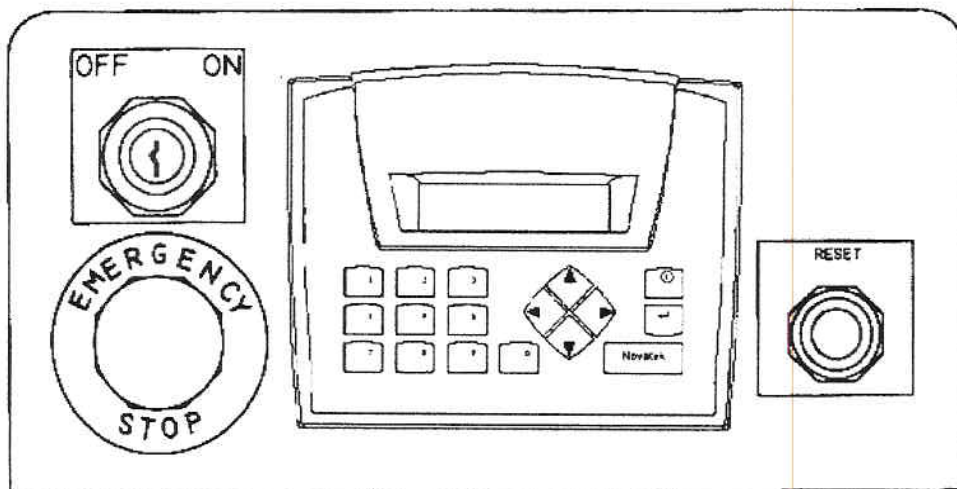
#### **3. Semiconductor Fuse**

This semiconductor fuse is used to protect the solid state relay and the other controls against any power surges within the line. If there is no power to the timer/heater panel or if you lose power suddenly, the semiconductor fuse may be blown. To replace the fuse or check condition of the fuse, you must open the control panel. The casing of the fuse will be discolored if blow. If fuse is blown, remove with pliers/wrench, and replace with new part. **CAUTION:** Make sure unit is unplugged from power source prior to fuse verification.

#### 4. Temperature / Timer Controller

The multi display temperature/ timer controller is pre-set from the factory ( Temperature 400- 625 Degrees and Timer 59.99 minute max ) allowing the operator to increase or decrease the temperature and timing set values. Once the set time runs out, the operator has the option to press the reset button, which will start the timing cycle over. The operator may choose to allow the set time to run out, which will shut off power to the heat panel allowing the panel to cool to room temperature.

The controller is linked to a thermo couple, which is attached to a thermo well on the heat panel, sending precise readings back to the controller. This will allow the operator to adjust the unit temperature (in degrees Fahrenheit) to meet your specific application.



**N1026 Control Panel**

#### 5. Circuit Breaker

This is attached to the unit's main power supply to help protect the unit's controls against power surges. This is also included to help protect the operator against electrical shock.

## SECTION IV

### PRIOR TO START-UP

Prior to attempting tile removal with the Nova STRIP 1026 ensure the following:

- A. Make sure to clean dirt and debris from floor surface prior to tile removal.
- B. Whenever possible strip excess wax and/or coating build-up on floor surface.
- C. Familiarize yourself with all fire extinguishers, fire safety equipment and emergency exits.
- D. Remove any dust, dirt or wax residue build-up on heater panel surface.
- E. Remove any dust or dirt built-up on the controls and control panel.
- F. Make sure you have heat resistant gloves for the HOT tile removal
- G. You might have to install the handle if the unit was shipped to your location. When installing the handle, on make sure to connect the power plug and thermal couple.

### START - UP

- A. Position unit over a section of concrete to allow unit to heat to desired temperature. If concrete area is unavailable position unit over tile being removed.
- B. Check unit to make sure breaker and key switch are in the off position.
- C. Plug power cord into unit and be sure to twist cord connector  $\frac{1}{4}$  turn clockwise to lock the plug into position.
- D. Switch main breaker to the ON position.
- E. Turn Key switch to the ON position. The temperature / timer controller will light and run a self diagnosis test which will take about five (5) seconds. If not, make sure Emergency STOP Button is in the pulled out position and the circuit breaker is in the ON position.

**CAUTION:** At this point unit is on and panel is heating.

- F. Heat panel will take about 15-20 minutes to heat to the factory preset temperature.  
**CAUTION:** If the Novastrip 1026 is positioned over tile, check tile periodically to ensure you are not over-heating the tile. Unit may have to be moved to a new section of tile before unit is up to full temperature.
- G. Once the unit reaches full temperature, reset timer to begin the timing function. This timer may be reset to meet your needs (see SECTION V) with a maximum preset time of 59.99.

**NOTE:** Once the timer reaches ZERO, power is cut to the heat panel, push the reset button to start elapse time or unit will proceed to cool down mode.



## SECTION V

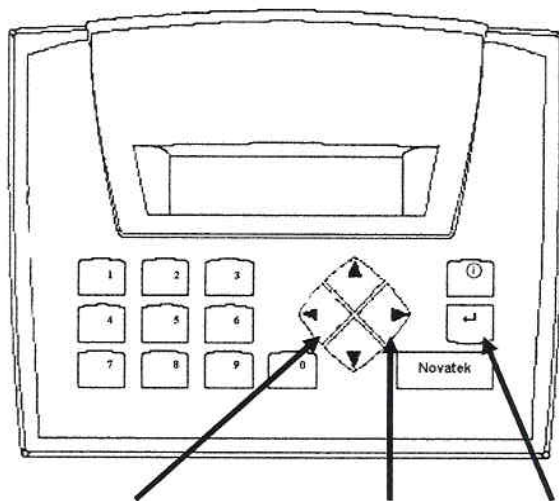
### SETTING CONTROLLER FUNCTIONS

#### Temperature / Timer Controller

A. NOVATEK has set-in parameters which will allow you to increase or decrease the temperature. Press the temperature button and then the up arrow to increase, or down arrow to decrease the set temperature by increments of 5 degrees. Once you reach the lowest set point (400°) or highest set point (625°) the LED reading will not allow you to proceed past these parameters. You may also use the key pad to set your desired temperature setting.

#### Timer

B. The timer has been preset for a maximum time of 59.99 which may be adjusted to meet your timing needs. Press the timer button and then the up arrow to increase or down arrow to decrease the set time. Once you reach the lowest set parameter (00.01) or highest set parameter (59.99), the LED reading will not allow you to proceed past these parameters. You may also use the key pad to set your desired timing parameter between these points. Once you reach your desired setting press the enter button (↵) to update your new settings in the controller. When a timing cycle has been activated the clock will count down. When the count reaches zero an alarm will sound. Press the reset button to re-start cycle and return power to the heat panel. If reset button is not pushed within 20 seconds cycle will end and unit will go into cool down mode.



( Temperature Button )      ( Timer Button )      ( Enter Button )

**WARNING: Attempting to circumvent preset factory parameters will result in the void of all warranties.**

## SECTION VI

### REMOVAL PROCEDURE

At this point the heat panel has heated to full temperature ready for heat application. Different floor characteristics such as the tile thickness, tile adhesive or just the material make up of the tile will result in different heat-up and removal times. A routine will quickly be established for each new removal application.

Removal Procedure:

1. Place NOVASTRIP 1026 over designated area of tile to be removed.
2. Push the timer reset button to start / continue the preset time cycle.
3. Once the timer reaches zero an audible alarm will sound. This means it is time to move the unit to a new section of tile to be removed. Press reset button.
4. While the unit is heating the new section of tile, remove the previously heated tile with a long reach scraper.
5. Once you have completed your removal application for the day, allow the time cycle to reach zero (alarm will sound) or press Emergency Stop Button.
6. This will shut off the power to the heat panel and the controller will go into cool down mode which will allow it to return to room temperature.
7. Place a block under the front of the unit's base shroud. This will allow air to circulate under the shroud helping to accelerate the cooling process.
8. The controller display will indicate the cooling process.
9. Once the controller displays "safe to transport" and the heat panel sticker on top of base shows 95° or less, the unit is ready to be moved.
10. Turn the key switch to the OFF position.
11. Switch circuit breaker to the OFF position.
12. Disconnect plug from power source.

The NOVA STRIP 1026 can now be safely transported.

### **WARNING**

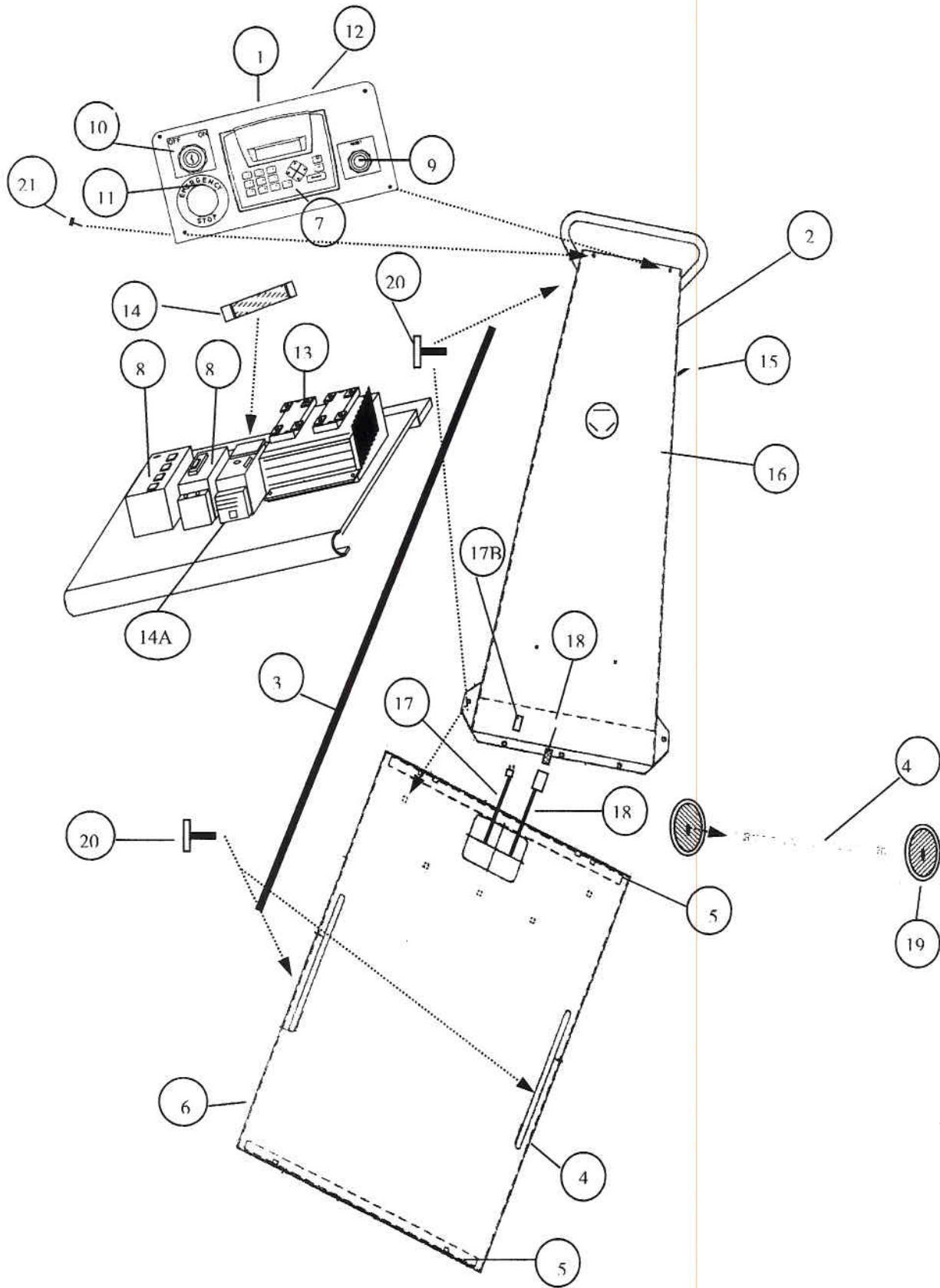
**The unit shroud may still be quite hot! Move the unit with severe caution, wear heat resistant gloves.**

## PARTS BREAKDOWN

<b>Ref.</b>	<b>Part No.</b>	<b>Description</b>
1	N102601	CONTROL PANEL
2	N102602	HANDLE ASSEMBLY
3	N102603	HANDLE SUPPORT BARS
4	N102604	BASE ASSEMBLY
4A	N102605	AXLE
5	N102606	PANEL RETAINER BRACKETS
6	N102607	HEAT PANEL
7	N200510	TEMPERATURE / TIMER CONTROLLER
8	N200600	POWER SUPPLY - DC CONVERTER
8A	N200610	THERMOCOUPLE TRANSMITTER
9	N401199	RESET BUTTON
10	N401201	KEY SWITCH
11	N401203	EMERGENCY STOP BUTTON
12	N401305	AUDIBLE ALARM
13	N601625	SOLID STATE RELAY
14	N500300	FUSE
14A	N500301	FUSE HOLDER
15	N500350	50 AMP BREAKER
16	N702627	RECESSED 4 WIRE 50 AMP PLUG
16A	N702626	FEMALE 4 WIRE 50AMP CONNECTOR
17	N401400	THERMO COUPLE
17B	N401402	THERMO COUPLE PLUG "FEMALE"
18	N401500	POWER CONNECTORS
19	N061500	WHEELS
20	N805381	GRIP KNOBS
21	N142078	SOCKET HEAD CAP SCREWS

**SEE DIAGRAM OF UNIT AND DIAGRAM OF CONTROL PANEL ON NEXT PAGE.**

# DIAGRAM OF UNIT AND CONTROL PANEL



## **SAFETY RULES**

The NOVATEK Corporation unit (NOVASTRIP 1026) is a highly efficient system designed to radiate heat through the tile to soften adhesive for tile removal. In order to properly operate this unit effectively and safely, the following safety precautions should be strictly adhered to:

1. Do not leave unit unattended when connected to power source. Turn OFF electric supply and disconnect from power source every time the unit is not being used and/or before servicing.
2. Do not operate with damaged and/or malfunctioning parts. If unit is not working as specified in this manual do to misuse. Repair damaged parts or return to an Authorized Repair and Service Center.

**\*Always repair with genuine NOVATEK parts, to ensure operational safety and to protect limited warranty.**

3. Keep loose clothing and all body parts away from face of heat source and/or heat shroud, as unit gets extremely HOT!
4. Sweep tile surface and remove any excess buildup of wax residue prior to heating surface. This will help to eliminate any fumes and foul odors.
5. Turn off all controls before disconnecting from power source. This will help against controller malfunction.
6. Do not operate around flammable or combustible liquids and/or gases.
7. Electric shock may occur if operated outdoors or on wet surfaces.
8. Never operate the unit in a manner where there is the possibility of physical contact with the heat panel.
9. Do not operate this unit if under the influence of alcohol, drugs or illegal substances that may impair operator reflexes and /or awareness.
10. It shall be the responsibility of the unit's owner to insure that the equipment is maintained in a safe operating condition.
11. Never touch the heat panel during heating cycle as the panel surface gets extremely hot. Heat panel surface will stay hot even after unit is turned off for about a period of 20 –30 minutes.

## **WARNING**

**Failure to follow these rules and instructions could result in serious bodily injuries, Failure to follow these rules and instructions could cause a serious malfunction of the unit.**

**Read these rules and instructions carefully prior to initial use of the unit.**

**Failure to read and follow these rules and instructions could result in property damage, serious bodily injury and/or death.**

## **TROUBLE SHOOTING**

This unit has several features for your safety and convenience. Here are some trouble shooting and maintenance tips.

1. The NOVASTRIP 1026 comes equipped with a third leg (semiconductor fuse) and a 50Amp breaker which are used to protect the solid state relay, timer / temperature controller against any sudden electrical surges.

**A. If the unit is plugged in and turned on but the heat panel does not heat:**  
Check 50Amp breaker to ensure it is in the ON position.

**B. If unit still does not heat and breaker is in ON position:**

Unplug power supply and take off control panel. Check semi-conductor fuse for any discoloration. If discoloration is present, replace the fuse.

**NOTE:** IF AFTER FOLLOWING THESE TWO PROCEDURES POWER IS NOT RESTORED, CONTACT A NOVATEK FACTORY TECHNICIAN.

2. If when you turn the unit on the temperature / timer controller does not light, disconnect power supply and remove control panel. Check for any loose or disconnected wires. If there are no signs of loose or disconnected wires contact a NOVATEK service technician. The unit may need servicing.

3. If the controller is lit and the temperature indicates a low reading, but the heat panel gets hot, the thermo couple on the base may need to be pushed fully into the panel. Check for any loose or disconnected wiring. If wires are intact, replace thermocouple.

4. If the controller is lit and counts down but won't reset when you depress the reset button, check to make sure there are no loose or disconnected wires. If the wiring is intact, you need to replace the reset button.

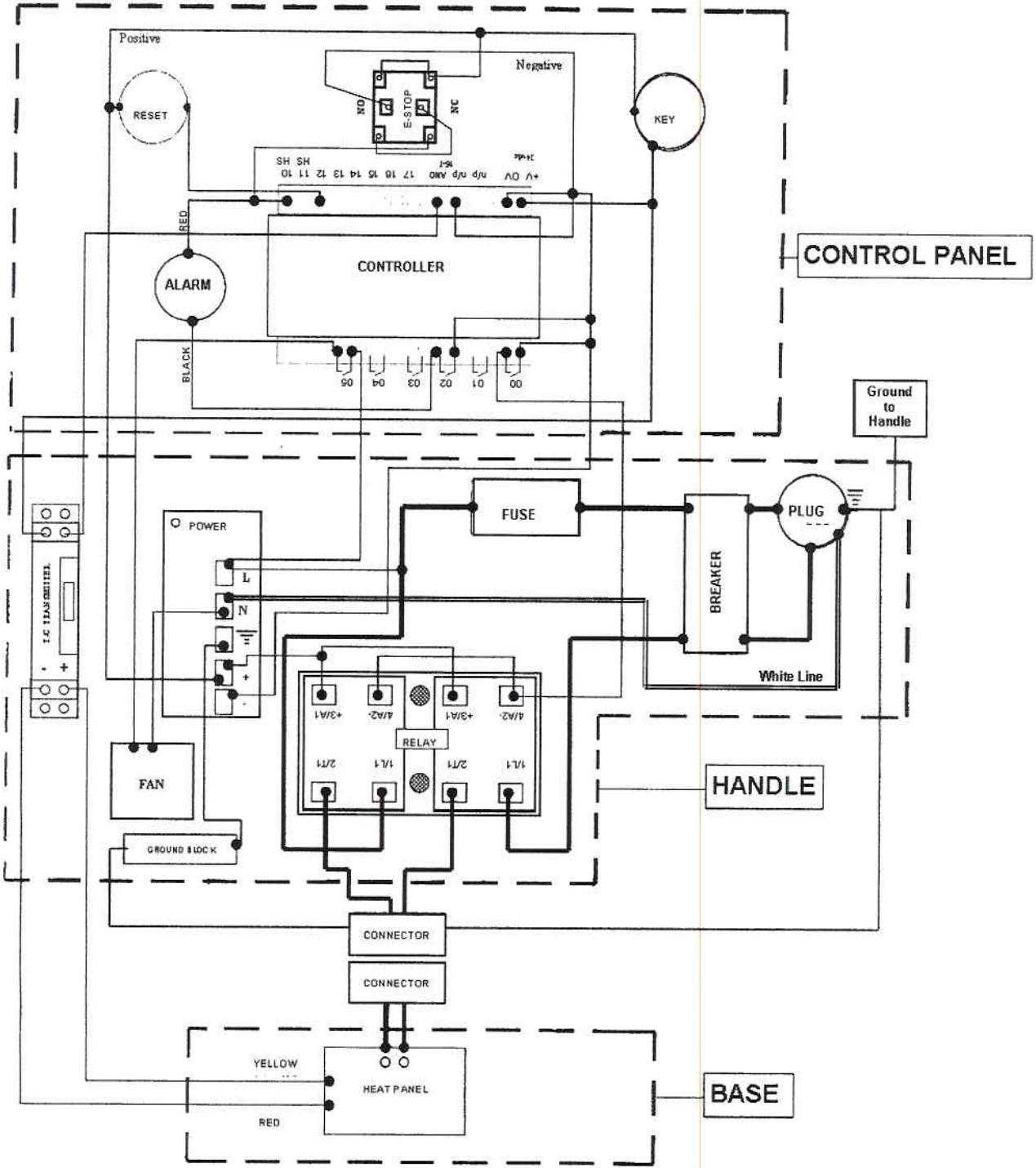
A. If the timer continuously resets without depressing the reset button, the reset button needs to be replaced.

5. Once the timer counts out or the controller exceeds its preset limits, an alarm should sound. If the alarm does not sound, it needs to be replaced.

6. If the unit is heating up but not reaching the set temperature, you need to make sure you have enough power being supplied to the unit. If you don't have enough power being supplied to the unit, it will heat but not to optimum efficiency.

# SECTION VIII

## WIRING DIAGRAM



## NOVATEK CORPORATION LIMITED WARRANTY

The **UNITS** manufactured by **NOVATEK CORPORATION** are warranted to be free from defects in material and workmanship for a period of **ONE YEAR** from date of purchase from **NOVATEK CORP.** This warranty does not apply to accessories.

This warranty applies only to **UNITS** purchased new from **NOVATEK CORPORATION.** This warranty does not apply to any **UNIT** which has been abused, misused, modified or repaired by someone other than **NOVATEK CORPORATION** or its authorized repair center.

If a **UNIT** proves defective in material or workmanship within one year of purchase from **NOVATEK CORPORATION,** it should be returned to **NOVATEK CORPORATION,** transportation pre-paid. The return must be authorized by a **RETURN AUTHORIZATION NUMBER (R.G.A. #)** obtained from **NOVATEK CORPORATION** prior to returning the **UNIT.** All packages must show clearly on the outside the return authorization number. All packages received without any R.G.A. # on the outside will be refused by **NOVATEK CORPORATION** receiving department.

Warranty claims will only be considered upon adequate proof of date of purchase. **NOVATEK CORPORATION** will, at its option, **REPAIR or REPLACE DEFECTIVE PARTS.** Repairs or replacements are warranted as above for the remainder of the original warranty period. The sole liability of **NOVATEK CORPORATION** and the user's exclusive remedy under this warranty is limited to the repair or replacement of the defective product.

THERE ARE NO OTHER WARRANTIES EXPRESSED OR IMPLIED AND **NOVATEK CORPORATION** SHALL NOT BE LIABLE FOR INCIDENTAL, CONSEQUENTIAL OR SPECIAL DAMAGES, OR ANY OTHER EXPENSES OR REPAIR OR REPLACEMENT AS DESCRIBED ABOVE.

All warranty claims should be forwarded to :

**NOVATEK CORPORATION**  
**155 Phillips Road**  
**EXTON, PA 19341**

**ATTENTION: CLAIM AND SERVICE DEPARTMENT**  
R.G.A. # \_\_\_\_\_

**CALL Toll Free at 1-866-563-7800 for your RGA number prior to shipping machine back.**

Also include a brief description of the problem as well as a phone number, contact name and return address in case **NOVATEK CORPORATION** service personnel has to get in contact with you.